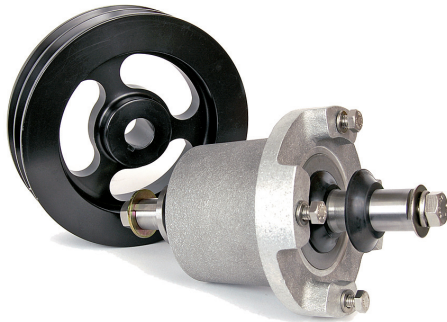
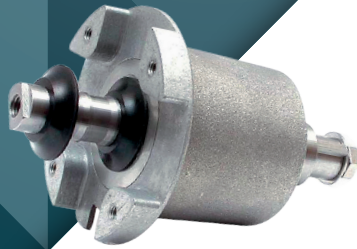


PICKER PARTS



UNTOUCHABLE HUBS STORK AND CANTRELL GSPK 720

PRODUCT HIGHLIGHTS

- ▶ Increased radial load capacity of OEM bearings, making the hub stronger and last longer
- ▶ Perfect fit with OEM finger discs and pulleys
- ▶ No additional lubrication required

PRODUCT GROUP DESCRIPTION

Hill's extensive line of picker parts includes hubs for the most popular models. Many design improvements have been incorporated to increase serviceability and extend the life of the product. All parts are made of the finest materials and are fully compatible with parts from the original manufacturer.

The Untouchable is Hill's premium line of extended life hubs. These hubs require no lubrication and are guaranteed to run for one year from purchase date, even in the toughest picking environment.

PRODUCT DESCRIPTION

The GSPK 720 series replaces OEM hubs with a tougher, cooler running aluminum housing. The bearings are upsized to deliver twice the radial load capacity of OEM bearings, making the hub run stronger and longer. All units are pre-lubricated and sealed in our factory, thus requiring no additional lubrication.

As the GSPK 720 series is compatible with OEM hubs, you can replace either one unit at a time or an entire bank. OEM finger discs and pulleys are always a perfect fit.

USED IN

- ▶ Stork pickers
- ▶ Cantrell pickers

Hill Parts USA | 1000 Evenflo Drive
Ball Ground, GA 30107
T: +1 770 735 4199 / +1 800 241 4003
F: +1 770 735 4494 | E: sales@hillparts.com
www.hillparts.com

HILLPARTS
For Poultry Processing

